



# Virginia Healthcare Workforce Briefs

Indicators from the Bureau of Labor Statistics'  
Current Employment Statistics Survey  
**Series 1: State & National Employment**

Series 1, Issue 72

March 2018

## Inside this Brief:

Virginia HC&SA Employment	2
Virginia Employment	2
National Employment	3
State Employment Growth	3
About the Data	4

Data in the report are seasonally adjusted. Self-employed persons, including health professionals in private practice, are not included.

## Highlights

- According to preliminary estimates, Virginia's Health Care & Social Assistance (HC&SA) sector erased all of its employment gains from January after losing 900 jobs in February. This loss represents a one-month annualized employment growth rate of -2.5%. With this result, Virginia's HC&SA sector has seen no change in employment so far in 2018.
- While Virginia's HC&SA sector lost jobs in February, employment in the state's overall economy did considerably better during the month. After increasing by 10,800 in January, the state's total nonfarm payroll grew by an additional 20,800 in February.
- The national HC&SA sector created 29,100 new jobs in February. This month's gain is slightly below the 12-month moving average of the change in national HC&SA employment. Over the past year, national HC&SA employment has increased by an average of 31,400 jobs per month.
- The nation's total nonfarm payroll increased by 313,000 in February. This gain translates into a one-month annualized growth rate of 2.6%. In addition, this result represents the largest one-month gain in the nation's total nonfarm payroll since July 2016.

## Data in Brief

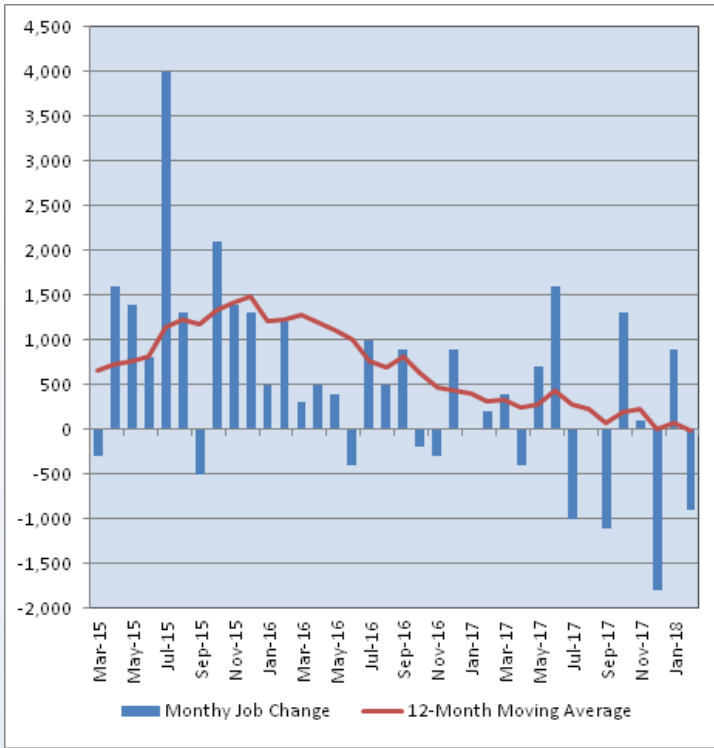
Seasonally Adjusted*	Employment, in Thousands				Growth Rate, Annualized		
	Feb. 2017	Nov. 2017	Jan. 2018	Feb. 2018	12 Month	3 Month	1 Month
<b>Nonfarm, Total</b>							
Virginia	3,949.4	3,956.6	3,964.9	3,985.7	0.9%	3.0%	6.5%
National	145,896.0	147,450.0	147,864.0	148,177.0	1.6%	2.0%	2.6%
<b>Health Care &amp; Social Assistance</b>							
Virginia	433.8	435.4	434.5	433.6	0.0%	-1.6%	-2.5%
National	19,368.5	19,653.5	19,716.2	19,745.3	1.9%	1.9%	1.8%
<b>All Other Nonfarm</b>							
Virginia	3,515.6	3,521.2	3,530.4	3,552.1	1.0%	3.6%	7.6%
National	126,527.5	127,796.5	128,147.8	128,431.7	1.5%	2.0%	2.7%

Preliminary estimates are italicized

\*Seasonally adjusted data are adjusted by the Bureau of Labor Statistics to account for weather, holidays and other seasonal changes. Economists use seasonally adjusted data to reveal underlying trends over time. This series uses seasonally adjusted data exclusively. When comparing data in this series to other HWDC series, or publications from other sources, it is important to note whether the data reported have been seasonally adjusted.

## Virginia HC&SA Employment

**Figure 1: Monthly Change in Employment in Virginia’s Health Care & Social Assistance Sector, Seasonally Adjusted.**



According to preliminary data released on Friday, March 23, 2018, by the U.S. Department of Labor, Bureau of Labor Statistics, Virginia’s HC&SA sector erased all of its employment gains from January by losing 900 jobs in February. This result represents a one-month annualized employment growth rate of  $-2.5\%$ .

With this result, Virginia’s HC&SA sector has experienced no change in employment so far this year. In addition, employment in Virginia’s HC&SA sector has fallen at a  $1.6\%$  annualized rate over the past three months. This negative growth rate is due to the loss of 1,800 HC&SA jobs in December.

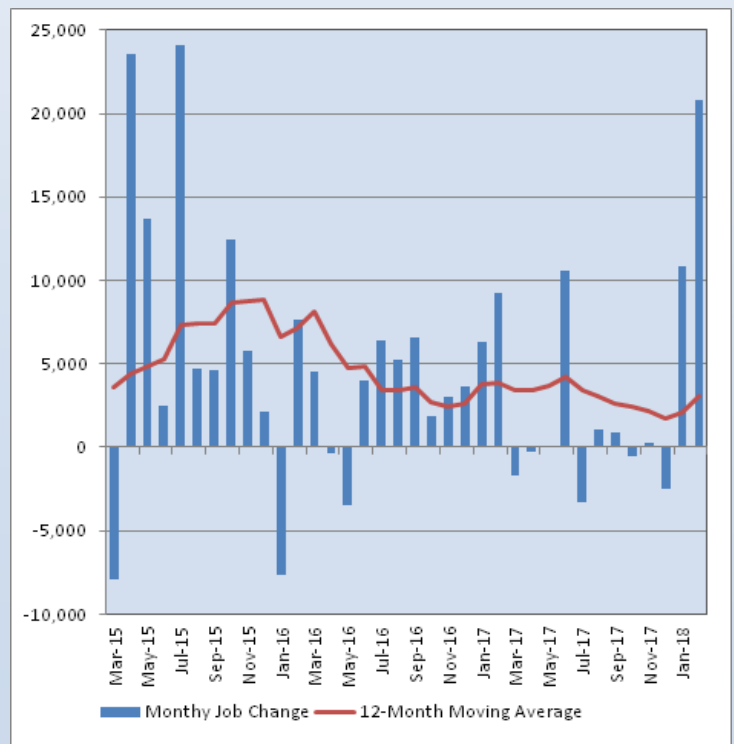
The long-term growth of employment in Virginia’s HC&SA sector has not been much better. In fact, Virginia’s HC&SA sector has experienced a net decline in employment over the past 12 months. Since March of 2017, the state’s HC&SA sector has lost 200 jobs. Because of these losses, the 12-month moving average of the change in Virginia’s HC&SA employment has turned negative for the first time in more than two decades.

## Virginia Employment

After languishing for several months at the end of 2017, employment in Virginia’s overall economy has shown strong signs of life in 2018. After growing by 10,800 in January, the state’s total nonfarm payroll increased by an additional 20,800 in February. This gain represents a one-month annualized growth rate of  $6.5\%$ , which far exceeds its current 12-month growth rate of  $0.9\%$ . In addition, this result represents the largest one-month gain in Virginia’s total nonfarm payroll since July of 2015. In that month, the state’s total nonfarm payroll increased by 24,100.

Thanks to this significant surge in growth over the past two months, the 12-month moving average of the change in the state’s total nonfarm payroll has nearly doubled since December. In that month, the 12-month moving average fell to 1,683, thereby reaching its lowest value since March of 2014. However, Virginia’s total nonfarm payroll has now increased by an average of 3,025 jobs per month over the past year. At its current level, the 12-month moving average of the change in the state’s total nonfarm payroll has now reached its highest value in six months.

**Figure 2: Monthly Change in Employment in Virginia’s Total Non-farm Payroll, Seasonally Adjusted.**

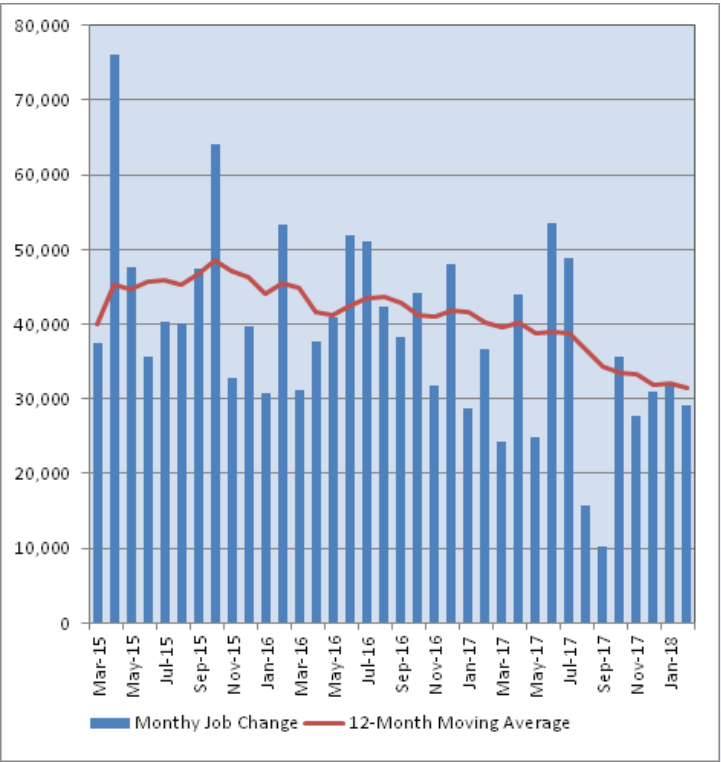


### National Employment

Once again, the national HC&SA sector experienced an increase in employment that was in line with recent growth. In February, the national HC&SA sector created 29,100 new jobs. This gain represents a one-month annualized employment growth rate of 1.8%. Regardless, February's result is slightly below the 12-month moving average for the change in national HC&SA employment. Over the past year, the national HC&SA sector has created an average of 31,400 jobs per month. This moving average continues to trend downward, suggesting that employment growth in the national HC&SA sector is weakening. In fact, this moving average reached a 40-month low in February.

On the other hand, employment in the overall national economy is strengthening. In February, the nation's total nonfarm payroll increased by 313,000. This gain represents a one-month annualized growth rate of 2.6%. In addition, this result represents the largest one-month gain in the nation's total nonfarm payroll since July of 2016. During the first two months of 2018, the nation's total nonfarm payroll has increased by 552,000. At the same point in 2017, the nation's total nonfarm payroll had increased by only 459,000.

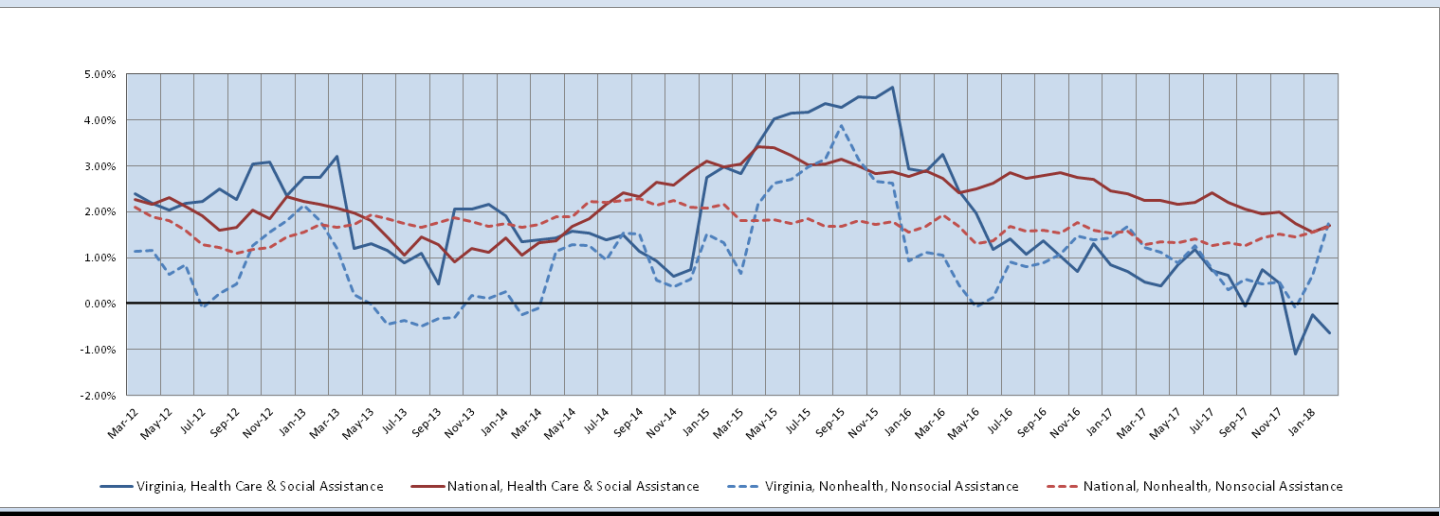
**Figure 3: Monthly Change in Employment in National Health Care & Social Assistance Sector, Seasonally Adjusted**



### State Employment Growth

The six-month moving average of the employment growth rate in Virginia's HC&SA sector fell in February from -0.23% to -0.64%. With this decline, the six-month moving average of the employment growth rate in Virginia's HC&SA sector has now remained negative for three consecutive months. On the other hand, the six-month moving average of the growth rate in Virginia's total nonfarm payroll nearly tripled in February from 0.62% to 1.83%, thereby reaching its highest level in more than two years. Meanwhile, the six-month moving average of the employment growth rate in the national HC&SA sector grew from 1.56% to 1.70% in February, and the corresponding moving average for the nation's total nonfarm payroll experienced a similar uptick from 1.56% to 1.68% during the month.

**Figure 4: Six-Month Moving Average, Employment Growth, Seasonally Adjusted**



Healthcare Workforce  
Data Center

Perimeter Center  
9960 Mayland Drive, Suite 300  
Henrico, VA 23233-1463

Phone: (804) 367-2115  
Fax: (804) 527-4434  
E-mail: [hwdc@dhp.virginia.gov](mailto:hwdc@dhp.virginia.gov)

[www.dhp.virginia.gov/hwdc/](http://www.dhp.virginia.gov/hwdc/)

*HWDC Staff:*

Elizabeth Carter, Ph.D. <i>Executive Director</i>	Yetty Shobo, Ph.D. <i>Deputy Director</i>
Laura Jackson <i>Operations Manager</i>	Christopher Coyle <i>Research Assistant</i>

Follow us on . . .

Tumblr: <http://vahwdc.tumblr.com/>

## About the Data

Data in this report are from the US Department of Labor, Bureau of Labor Statistics' Current Employment Statistics program. The CES program surveys about 143,000 businesses and government agencies monthly. Unless otherwise noted, this series uses seasonally-adjusted data that removes seasonal variations related to weather, holidays, weekends, seasons and other predictable variations. This allows us to better examine underlying trends in the labor market. Data from recent months are preliminary and subject to revision in future releases from the CES. Revisions will be reported in future editions of this series. Unless otherwise noted, the CES data presented in this series:

### Includes:

- ◆ Data on employed individuals drawing a paycheck (payroll employees).
- ◆ All employees, regardless of role, occupation or hours worked.
- ◆ HC&SA employees in the private sector only.
- ◆ Persons employed by health professionals in private practice.
- ◆ Both government and private sector workers in nonfarm employment data.

### Does not include:

- ◆ Self-employed workers or volunteers, including health professionals in private practice.
- ◆ HC&SA employees in the public sector. (These are counted as government workers in monthly reports).
- ◆ Information on hours worked or the quality of employment.
- ◆ Government workers in HC&SA level data. (Government workers, regardless of occupation and role, are classified as public sector employees).

The Department of Health Professions Healthcare Workforce Data Center works to improve the data collection and measurement of Virginia's healthcare workforce through regular assessment of workforce supply and demand issues among the 80 professions and 350,000 practitioners licensed in Virginia by DHP.

The HWDC collects data on Virginia's licensed health professionals through surveys completed during the online license renewal and application process. Survey results and data may be accessed on our website: [www.dhp.virginia.gov/hwdc/](http://www.dhp.virginia.gov/hwdc/).

The HWDC also provides a series of Virginia Healthcare Workforce Briefs based on data collected by the US Department of Labor's Bureau of Labor Statistics and the US Department of Commerce' Bureau of Economic Analysis.

Virginia Healthcare Workforce Briefs:

Series 1: State & National Employment (Monthly)

Series 2: Virginia Regional Employment (Monthly)

Series 3: Income & Compensation (Quarterly)